

Figure 1 - Stockrington

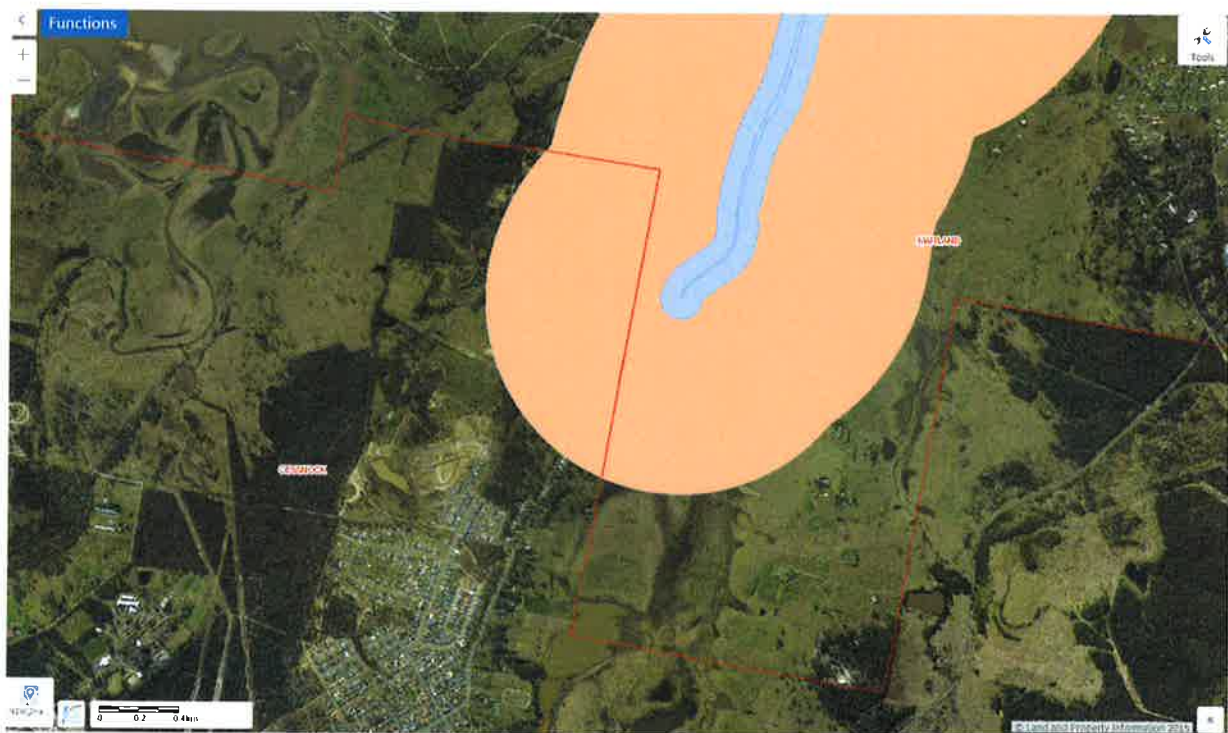


Figure 2 - Clifleigh

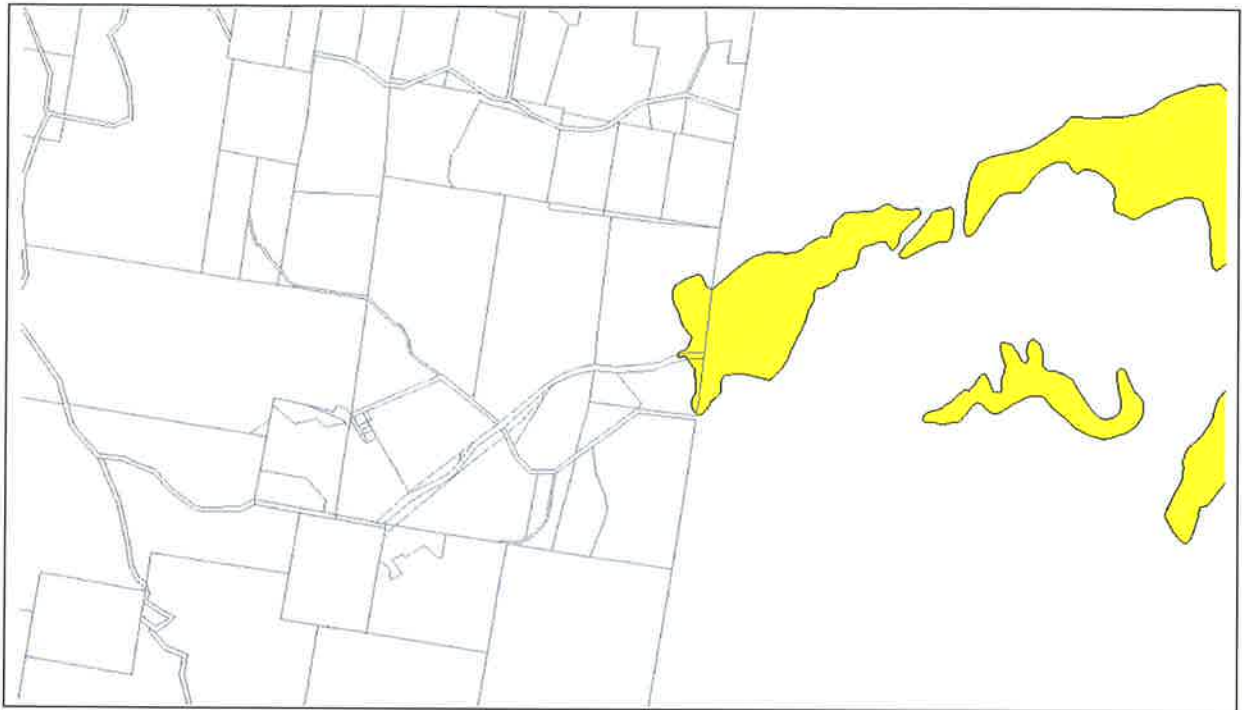


Figure 3 – Extent of SEPP 14 Wetland in Cessnock LGA

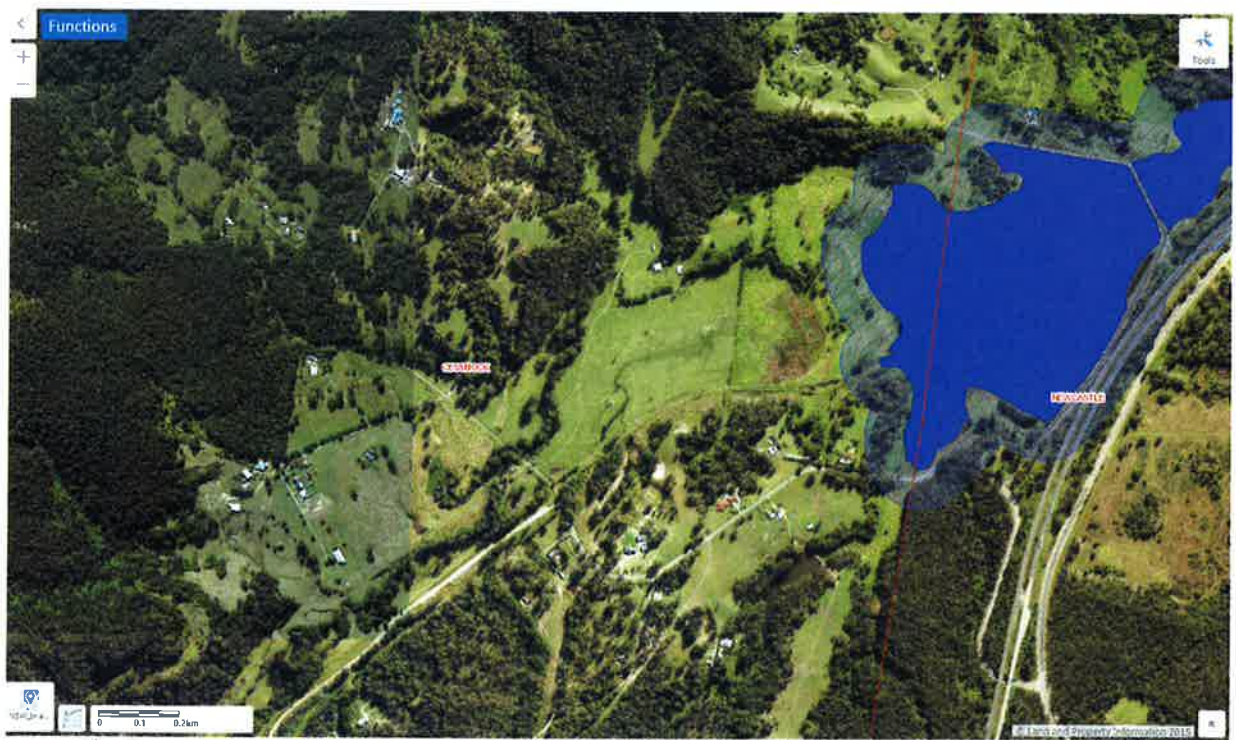


Figure 4 – Proposed Coastal Wetlands and Proximity Area for Coastal Wetlands at Stockington



Figure 5 – Coastal Environment Area Map at Clifftleigh

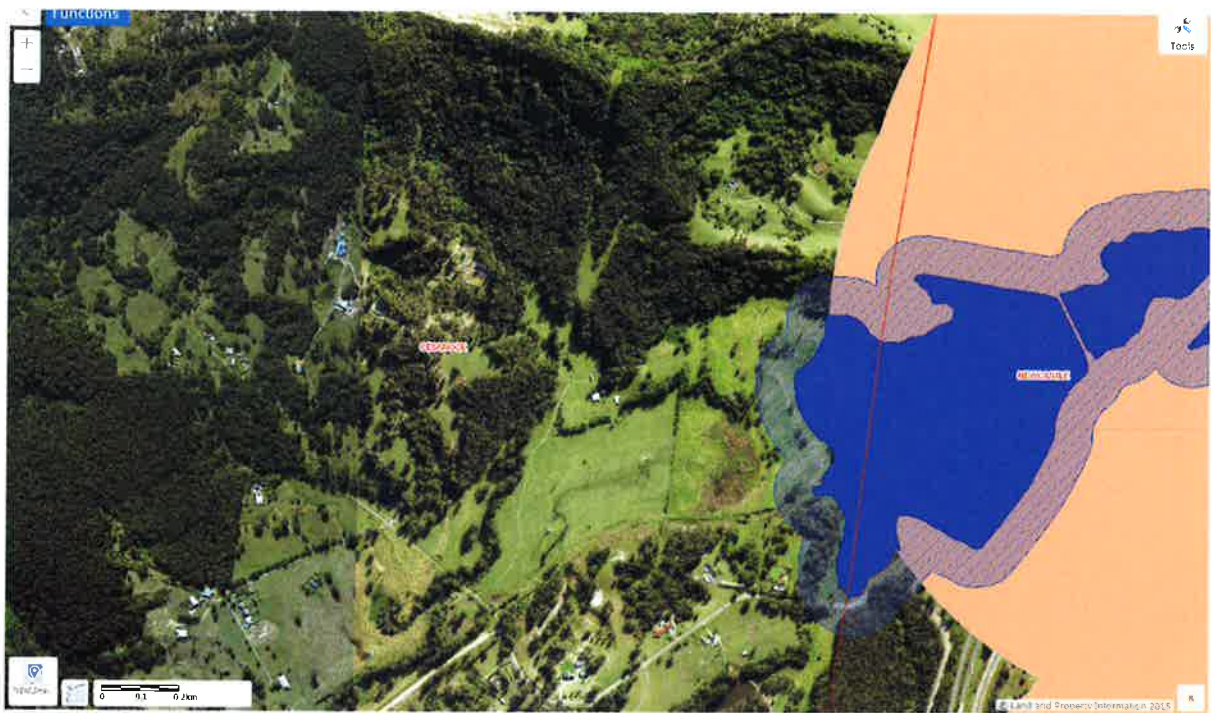


Figure 6 – Coastal Use Area at Stockington



Figure 7 – Coastal Use Area at Clifton

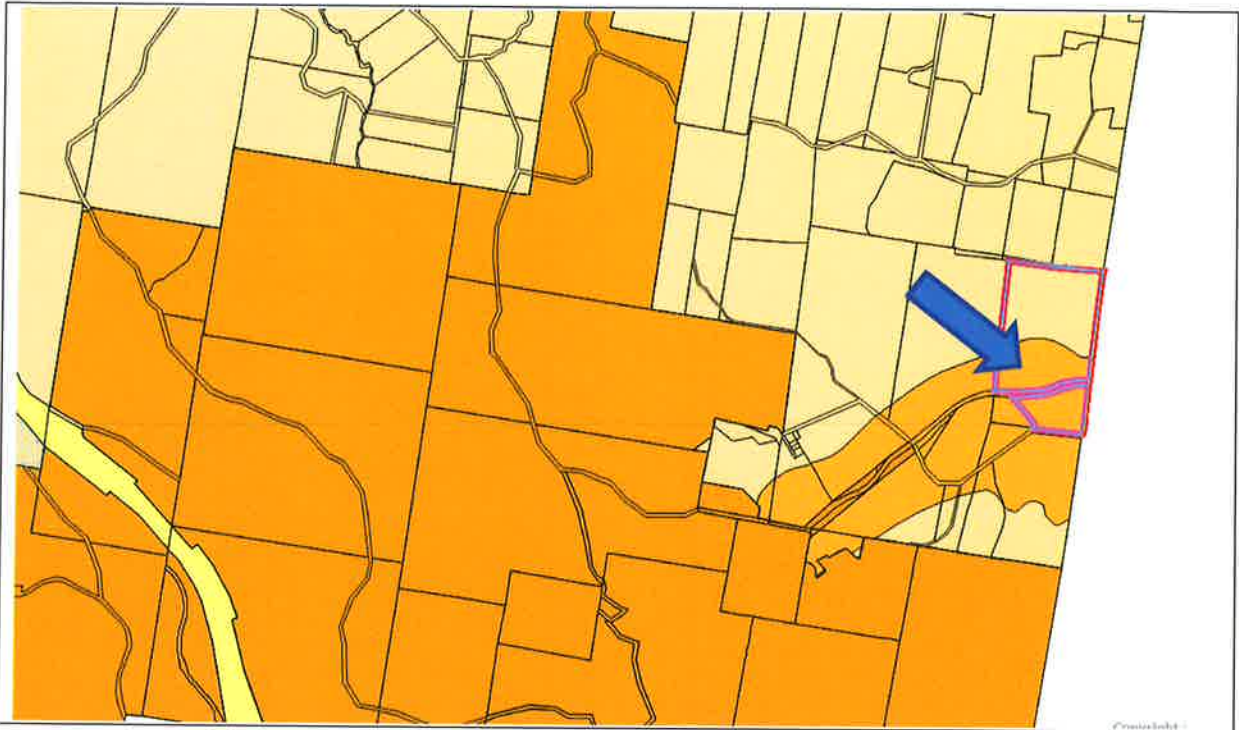


Figure 8 – E2 Environmental Management Zone at Stockington

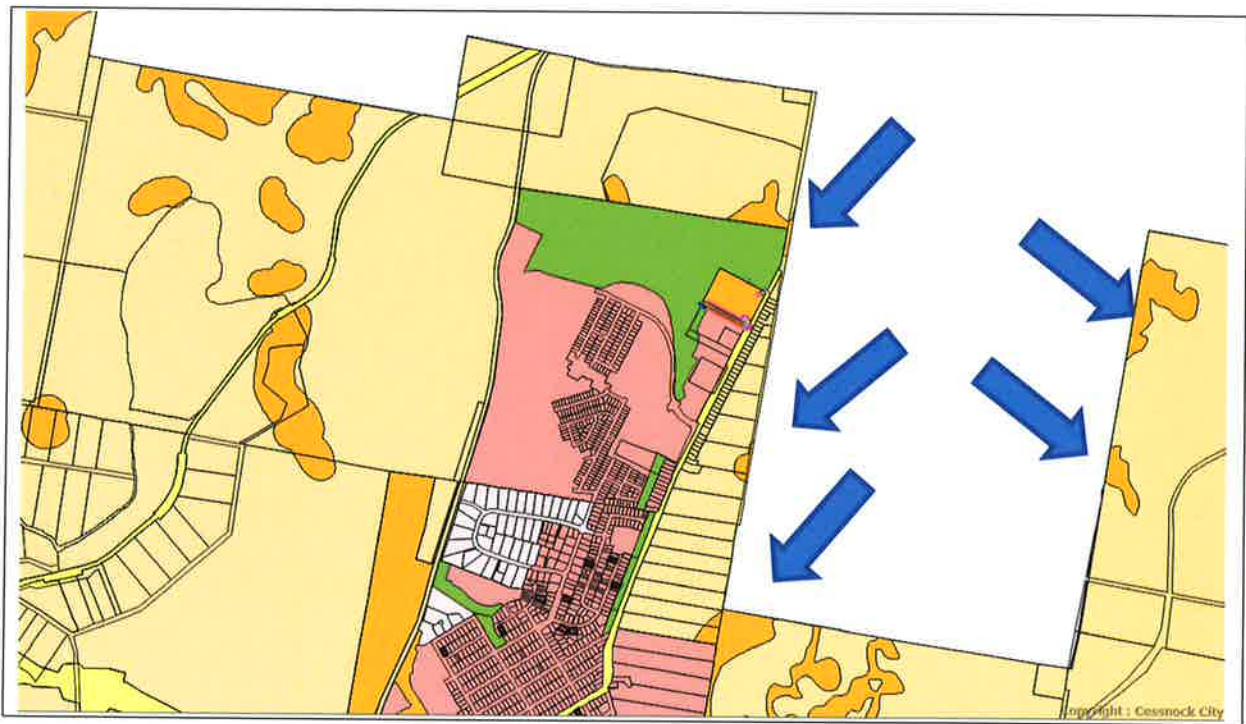


Figure 9 – E2 Environmental Management Zone at Clifleigh